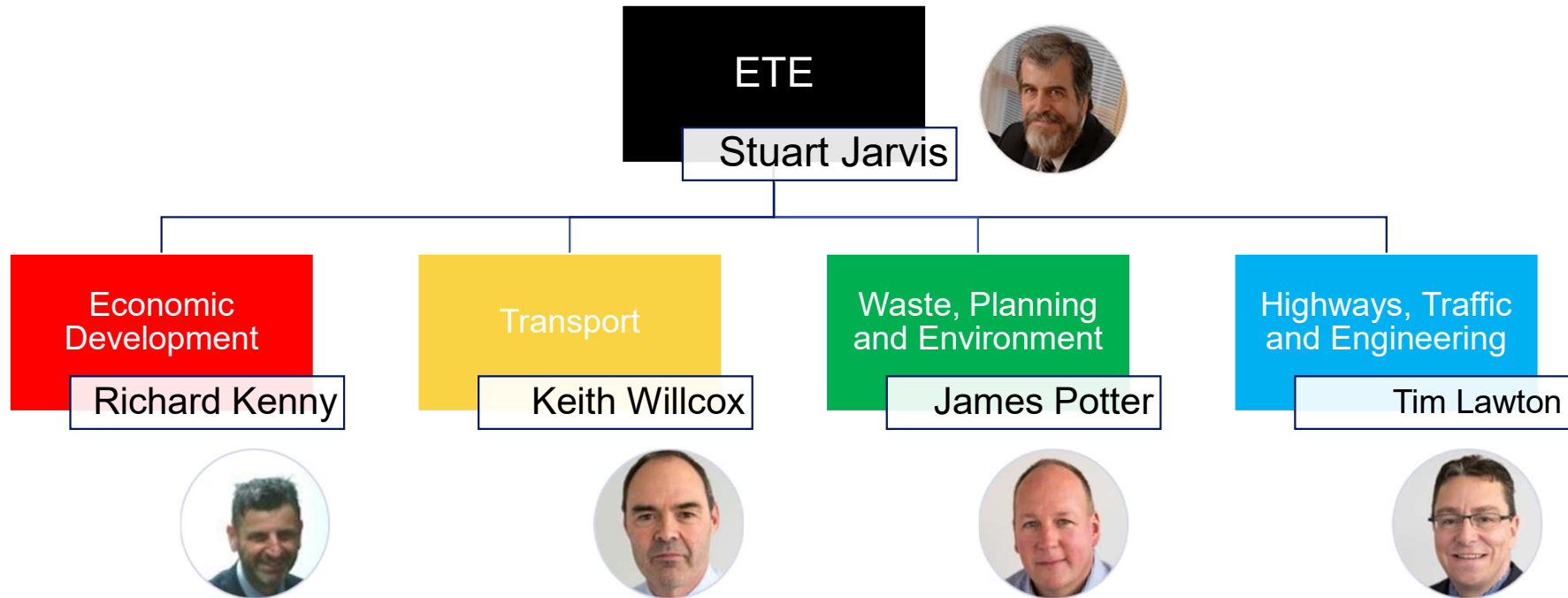




Hampshire  
County Council

**ETE Select Committee**  
**17 June 2021**

# Economy, Transport and Environment (ETE)



Page 2

## Aim

- A prospering Hampshire

## Objectives

- The right conditions are developed for sustainable economic growth
- Sustainable economic growth is supported by key sectors
- A strong and visible evidence base for decision making

## Services include

- Economic Development – support Hampshire’s business community, promote tourism
- Economic and Business Intelligence Service – provide data and analysis on a range of economic and business topics

# Economic Development



**£3 billion**

Amount generated annually to Hampshire, Southampton and Portsmouth economy by tourism



**835,000**

People employed by businesses in Hampshire, Southampton and Portsmouth



**90,235**

Businesses in Hampshire, Southampton and Portsmouth



**54 million**

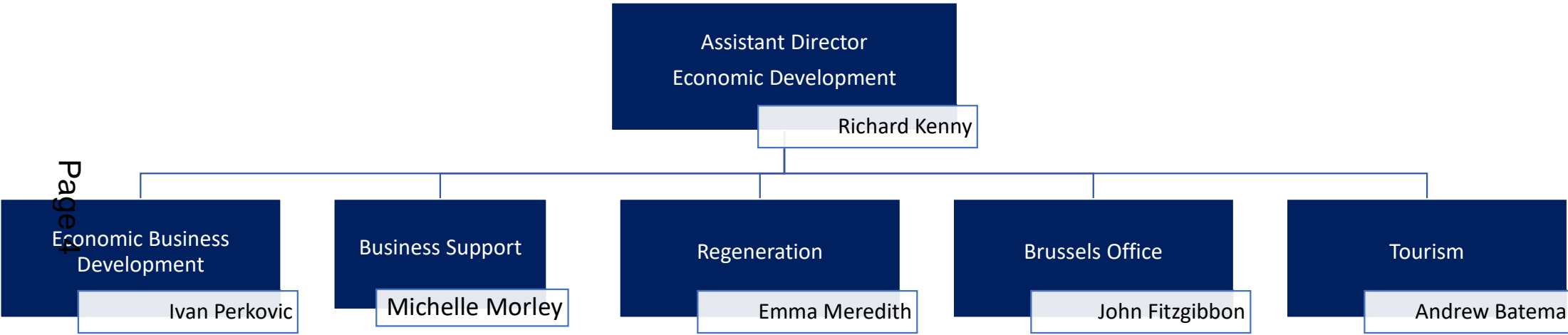
Day visitors to Hampshire, Southampton and Portsmouth annually



**1.4 million**

Residents in Hampshire (not including Southampton and Portsmouth)

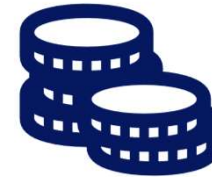
# Senior Management Structure



# Resources



**16.8**  
Staff (FTE)



**£1m**  
Revenue budget

# Current Outlook

## Covid economic recovery

- Ongoing recovery action planning responding to business needs – working in collaboration to ensure emergency and re-opening support is provided to businesses

## Economic Growth Strategy

- A new sub-national economic strategy is under formulation in light of the review of the Local Enterprise Partnerships (LEPs) and the phasing out of their strategic economic plans and local industrial strategies, that will renew the vision, direction and economic priorities for Hampshire
- New Economics Foundation work emerging in support of a green economic recovery

## Levelling Up

- Programme management of the Community Renewal Fund the precursor to the Shared Prosperity Fund and working in collaboration across the Levelling Up Fund
- Pan-Hampshire Place Story 2050, following Hampshire Commission 2050, launched and Place Leadership Board and Ambassador Programme under formulation with aspirations for stronger business leadership

## Strategic collaboration and partnerships

- Working in collaboration with HMG, other national and regional bodies, the two LEPs, the district, unitary and neighbouring authorities across the economic growth agenda and making sense of the future opportunities to secure better outcomes via increased functions, powers and resources with clarity around future asks and offers

## Freeport

- Working in collaboration to secure a successful Freeport Bid, the formation of a Freeport Company, business case and delivery in negotiation with HMG

## Economic Development support services

- Business Intelligence – oversight, development and delivery of a robust evidence base, providing regular national and sub-national economic and business analysis and intelligence, briefings and insights, generating revenue through key service level agreements
- Regeneration – collaboration with partners on major town centre and other big regeneration schemes such as Waterside, development of workspace
- Business support – including support for businesses post-COVID and post-Brexit, based on key sectors, key assets and development of propositions
- Support visitor economy – including tourism and hospitality sector during COVID and the Visit Hampshire website
- Brussels Office – submission of Interreg funding bids

## Aim

- Keeping Hampshire Moving

## Objective

- The highways network and transport systems support the economy and are accessible to all

## Services include

- Integrated Transport – Transport planning and policy, transport schemes development and passenger transport, including community transport, concessionary fares, supported bus services, blue badge and traded services (transport projects)
- Implementation – delivery of the Capital programme, travel planning, developer road agreements, Highways development planning and traffic surveys

# Transport



**£170m**

Competitive capital funding secured since 2018/19



**96%**

Of Hampshire journeys are on roads



**250,000**

Concessionary pass holders



**7%**

Of commuter trips less than 5 kms long are made by bicycle across Hampshire

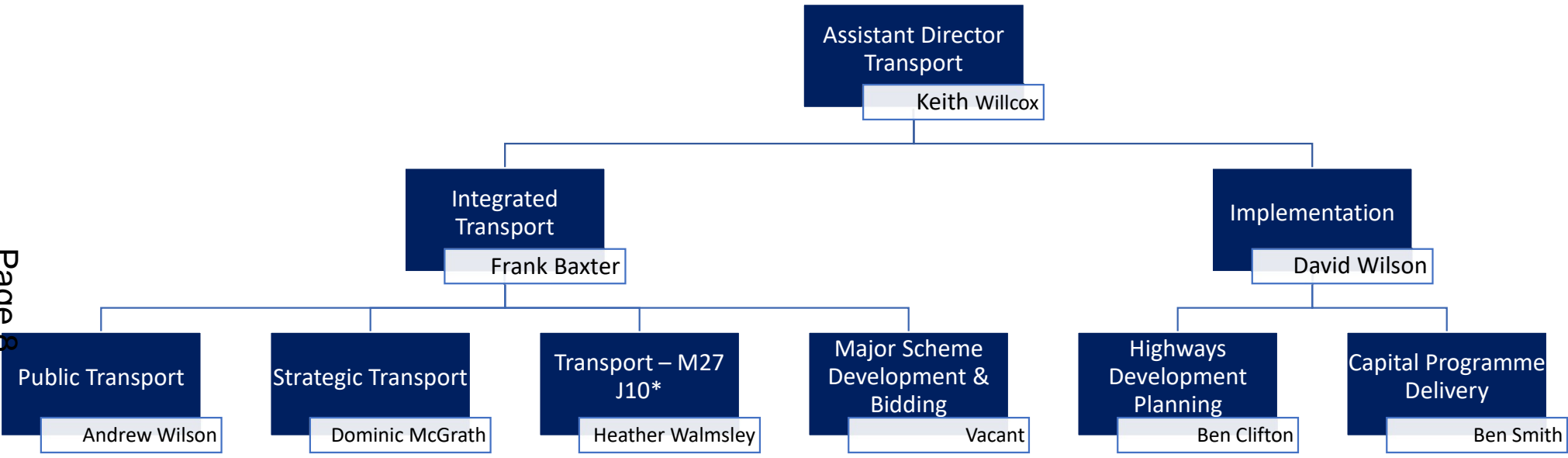


**11%**

Of bus services in Hampshire are subsidised - covering 31 million bus passengers

# Senior Management Structure

Page 8



\*recent change



# Resources



**189.7**  
Staff (FTE)



**£20.1m**  
Revenue budget  
21/22

**Integrated Transport - £18.9m**

- Includes £2.6m on Local Bus
- Includes £14.5m on Community Transport and Concessionary Fares

**Implementation - £1.16m**

## Capital Programme

	Total Starts value			Forecast for 21/22 - 23/24
	12/13 - 14/15	15/16 - 17/18	18/19 - 20/21	
<b>Major Schemes (over £2m)</b>	£27m 5 schemes	£83m 11 schemes	£108m 9 schemes	£59m 10 schemes, plus M27 J10 £70m - £100m
<b>Named Schemes (£70k - £2m)</b>	£31m 119 schemes +	£11m 58 schemes +	£31m 43 schemes +	£35m 36 schemes +
<b>Total value:</b>	£58m	£94m	£139m	£94m, with M27 J10 = £164m - £194m

In addition, 2021/22 and 2022/23 will see on the ground construction of many schemes with a start value captured in the 2018/19 - 2020/21 column, with record expenditure forecast for this year

# Current Outlook

## Current Workload

- Local Transport Plan 4 (LTP4)
  - Bus Back Better Strategy
  - Active Travel
- Transport for South East (TfSE) / Solent Transport
- Basingstoke – new hospital major development
- Waterside – A326 / Waterside Rail
  - M27 Junctions 10 Welborne
  - Delivery of Capital Programme
- Delivery of Transforming City Fund Bids
  - Southampton and Portsmouth City Regions

## Opportunities

- Bidding
- Trading

## Challenges

- Economic recovery post-COVID
- Integrated land use and transport planning
  - Air Quality
- Future of Mobility
- Green Agenda

## Stakeholders and Partners

- Department for Transport
- Highways England
- Network Rail
- Other Government Departments
- Local Enterprise Partnerships (LEP)
- Public Transport Operator
- Developers
- Contractors
- TfSE
- Passenger Transport User Groups and Forums

## Aim

- Shaping Hampshire's Future

## Objectives

- To be Carbon Neutral by 2050 and build resilience to impacts.
- To ensure appropriate development, including necessary infrastructure, is planned and delivered.
- To protect and enhance Hampshire's natural and built environment.
- To manage Hampshire's waste in line with the waste hierarchy.

## Services include

- Waste and Resources – Management of Waste Disposal Contract and HWRCs
- Planning and Infrastructure – Enforcement, Development Management, Strategic Planning, Policy
- Environment – Ecology, Archaeology, Flood and Water Management, Environmental Impact, Landscape
- Climate Resilience and Sustainability



**95%**

Of Hampshire waste is recycled, reused, composted or sent to energy recovery



**85%**

Of land in Hampshire is rural



**85**

Planning applications received during 20/21



**700**

Flood enquiries received during 20/21



**50,000+**

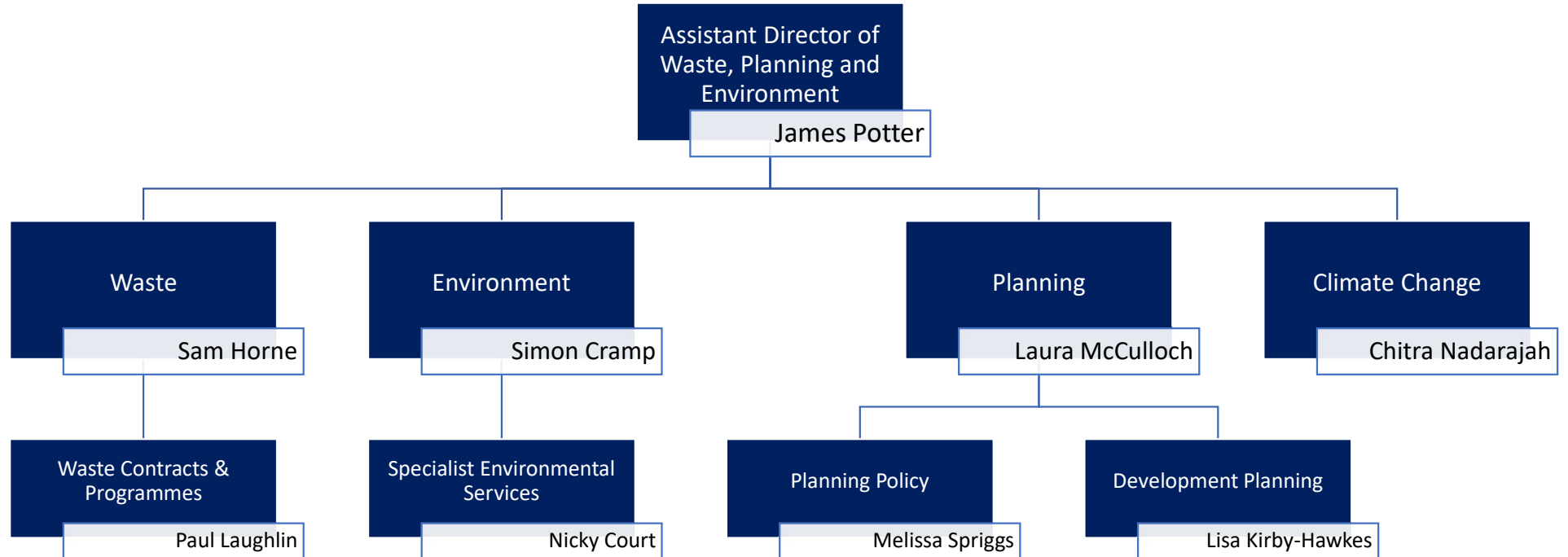
Homes can be powered by the waste sent to energy recovery across Hampshire each year

# Waste, Planning and Environment



# Senior Management Structure

Page 12



# Resources



98

Staff (FTE)



£44m

Revenue budget  
21/22

**Waste** - £42.5m  
**Planning** - £0.7m  
**Environment and Flood and  
Water Management** - £0.5m  
**Climate change** - £0.3m



£0.47m

Capital programme  
21/22 – 23/24

**Waste** - £0.155m  
**Flood Risk and Coastal Defence** - £0.318m

We expect this to increase during the time period as one-off government grants and other funding from successful bids can be allocated to this budget.

# Current Outlook

## Waste

- Delivery of new recycling infrastructure across Hampshire, including provision for separated food waste
- Renegotiation of both waste contracts to deliver savings and reversal of COVID impacts on waste volumes and resident behaviour
- Government consultation on waste prevention programme

## Climate Change

- Transport emissions through LTP4
- Residential emissions through flagship community projects like the Greening Campaign
  - Energy Pathways project with University of Southampton
- Innovative Green Recovery project with the New Economics Foundation
- Hampshire 2050 event on Green Recovery post-COVID (July 2020) and publication of State of Natural Environment, Economy and Society Reports (Jan 2021)

## Stakeholders and Partners

- District, Borough and Unitary Authorities
- New Forest National Park
- South Downs National Park
- Environment Agency
- Natural England
- Historic England
- Forestry Commission
- Woodland Trust
- Wildlife Trust
- Water companies

## Strategic Planning

- Update of the Minerals and Waste Plan
- Contracts with the Central and Eastern Berkshire Authorities for planning policy and Somerset for development management
- Strategic Infrastructure Framework review
  - Land supply monitoring data

## Environment

- Continuation of Traded Services activity
- Delivery of changing policy requirements lead by the 25yr Environment Plan and the Environment Bill i.e. Local Nature Recovery Strategy, National Capital Biodiversity Net Gain and the proposed Hampshire Environment Strategy
- Increase in flood risk from all sources and pressure on water quality and resources

## Aim

- Keeping Hampshire Moving

## Objectives

- Highways are safe, well maintained and resilient
- Travel is safe, accessible and well managed

## Services include

- Highways Delivery – Maintenance, Customer Enquiries, Inspections, Arboriculture, Weather Emergency Response
- Highways Commissioning – Planned Maintenance, Asset Management, Road Works Coordination
- Highways Traffic – Road Safety, Traffic Signals, Street Lighting
- Engineering Consultancy – Highway and Structure Design, Road Agreements, Safety Audits



**4,300**

Miles of footway maintained across Hampshire



**5,500**

Miles of carriageway maintained across Hampshire



**75,000**

Highway related detailed enquiries each year



**155,000**

Streetlights and illuminated signs



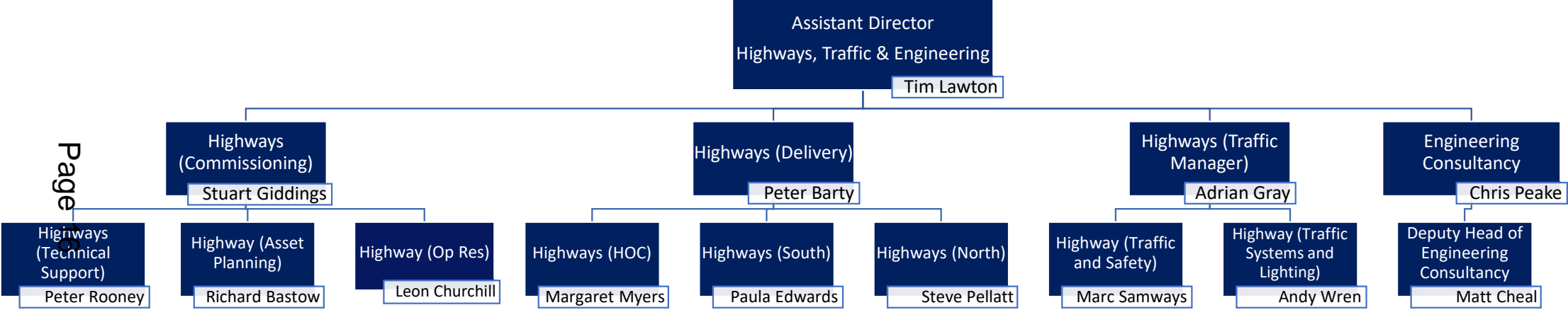
**580**

Traffic signal installations

# Highways, Traffic and Engineering



# Senior Management Structure



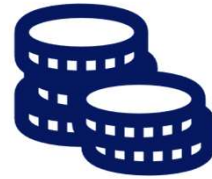


# Resources



564.15

Staff (FTE)



£38.9m

Revenue budget  
21/22

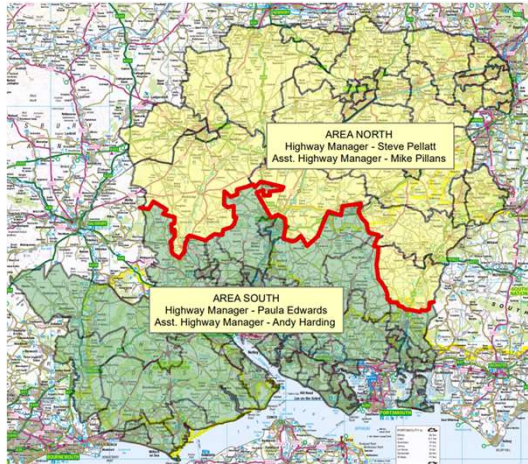
Engineering Consultancy – (£0.6m)  
Highways HQ - £10.6m  
Highways Ops - £13.9m  
Highways Traffic - £15.1m



£48.3m

Capital programme  
21/22

This includes Highways Ops, Highways  
Commissioning, Structures and Traffic Signals



# Current Outlook

## Highways

- Increasing demand – enquiries and defects
- Longstanding shortfall in investment (national issue)
  - Climate change impact
- Milestone contract performing well

## Traffic

- Ageing signals infrastructure
- LED switchover (T21 project) – up to 11,000 units
- Siemens and SSE performance good
- Parking – new service in 2020, delivered by NSL

## Engineering

- Busy programme of capital scheme design and delivery
- Acknowledged centre of excellence
- Embedded commercial approach

## Stakeholders and Partners

- Milestone
- Highways England
- Atkins
- Siemens
- SSE
- Environment Agency
- Forestry Commission
- The New Forest Verderers
- New Forest National Park
- South Downs National Park
- Department for Transport
- District and Borough Authorities